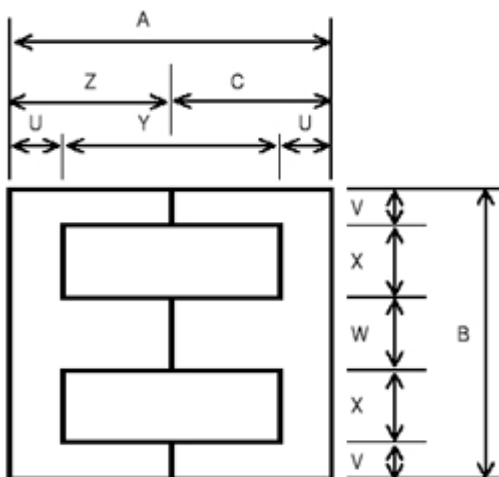
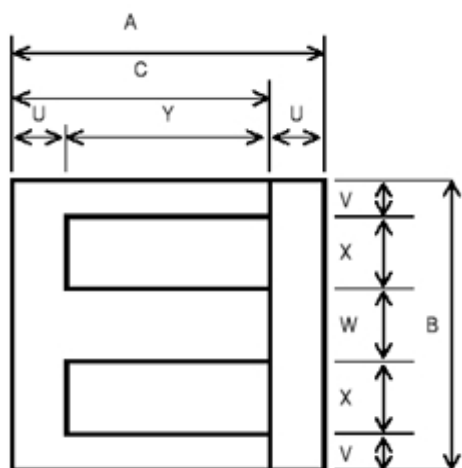


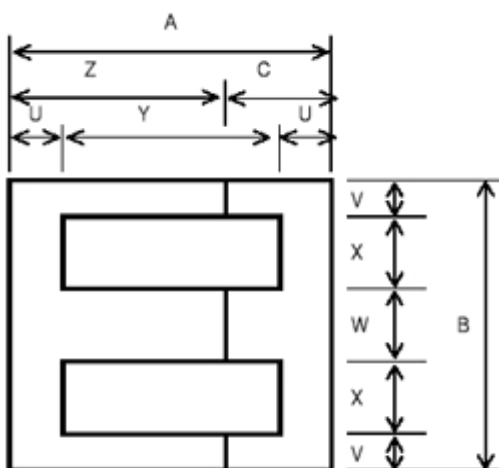
E-CORE



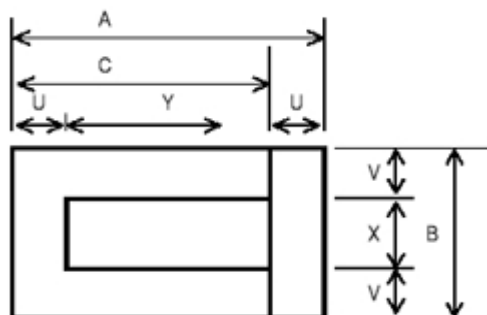
EE-CORE(A-TYPE)



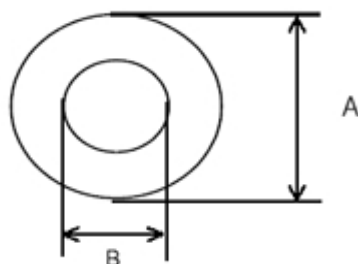
EI-CORE



EE-CORE(B-TYPE)



UI-CORE



ZCT CORE

SHINCORE 新核科技
SHIN CORE TECHNOLOGY (HK) LIMITED

TYPE	A	B	C	U	V	W	X	V	Z
ED-8 (8X11)	—	8	11	2.7	1.2	2.4	1.6	8.3	—
ED-8 (8X13.6)	—	8	13.6	2.8	1.2	2.5	1.55	10.8	—
ED-8LE (8X14)	—	8	14	2.7	1.2	2.4	1.6	11.6	—
EE3031EL	—	9.525	9.525	1.19	1.19	2.385	2.38	8.335	—
EL10-9.5	—	10	9.5	2	1.35	2.5	2.4	7.5	—
ED-12.6	—	12.6	17	4.1	1.9	3.8	2.5	12.9	—
EL12.7	—	12.72	11.11	1.58	1.59	3.18	3.18	9.53	—
EL13.5	—	13.5	16	2.4	2.2	4.8	2.15	13.6	—
ED-16	—	16	21	4.9	2.4	4.8	3.2	16.1	—

ED-20	–	20	26	6	3	6	4	20	–
ED-25	–	25	33	7.8	3.8	7.6	4.9	25.2	–
EI14	10.5	14	8.75	1.75	1.75	3.5	3.5	7	–
EL14	–	14	10.5	1.75	1.75	3.5	3.5	8.75	–
E14-12	–	14	12	2.5	1.75	3.5	3.5	9.5	–
E15.2	–	15.24	10.795	1.905	1.905	3.81	3.81	8.89	–
EI16	14	16	12	2	2	4	4	10	–
EL16	–	16	14	2	2	4	4	12	–
EL16 (LOSS TYPE)	–	16	16	2.4	2.4	4.8	3.2	13.6	–
UI16	18.1	16.6	15.3	2.8	2.8	–	11	12.5	–
E16-11	–	16	11	2.4	2.4	4.8	3.2	8.6	–
EE19 (18.8)	42	18.8	21	5.2	3.3	6.8	2.7	31.6	21
EI19	15	19	12.5	2.5	2.375	4.75	4.75	10	–
EL19	–	19	15	2.5	2.375	4.75	4.75	12.5	–
EL185	–	19.05	13.49	2.38	2.38	4.76	4.76	11.11	–
EI186	11.15	19.08	8.75	2.4	2.385	4.77	4.77	6.35	–
EL186	–	19.04	11.13	2.4	2.38	4.76	4.76	8.73	–
EI187	15.391	19.08	13.51	2.4	2.385	4.77	4.77	11.11	–
EL187	–	19.08	15.9	2.4	2.385	4.77	4.77	13.5	–
EE20 A TYPE	20.2	20	10.1	3	3	6	4	14.2	10.1
EE20 B TYPE	20	20	6	3	3	6	4	14	14
EE22	24	22	12	3	3	6	5	18	12
EL22	28	22	14	3	3	6	5	22	14
EI24	18	24	15	3	3	6	6	12	–
EL24	–	24	18	3	3	6	6	15	–
E25.4	–	25.4	12.7	3.18	3.175	6.35	6.35	9.525	–
EL24/25	–	25.4	19.05	3.175	3.175	6.35	6.35	15.875	–
EE24/25	19.05	25.4	6.35	3.175	3.175	6.35	6.35	12.7	12.7
EE24/25 (GAP)	19.05	25.4	6.35	3.175	3.175	6.35	6.35	12.7	12.7
EE26/27	27.01	31.75	9.45	4.77	4.76	9.53	6.35	17.47	17.47
EI28	25	28	21.5	3.5	3.5	7	7	18	–
EE32	32.24	31.97	16.12	4.65	4.75	9.47	6.5	22.94	16.12
EI375	28.55	34.93	23.8	4.75	4.78	9.53	7.92	19.05	–
EI35	29.5	35	24.5	5	5	9.6	7.7	19.5	–
EI41	33	41	27	6	6	13	8	21	–
ZCT12.2	12.2	8.8	–	–	–	–	–	–	–
ZCT13.0	13	9.3	–	–	–	–	–	–	–
ZCT13.5	13.35	9.85	–	–	–	–	–	–	–
ZCT15	15	11	–	–	–	–	–	–	–
ZCT17.8	17.8	13.35	–	–	–	–	–	–	–
DU18	–	15.88	34.93	9.53	4.76	–	6.36	4.76	–
DU2023	–	19.05	30.17	9.53	4.765	–	9.53	4.765	–
U-18.34	–	18.34	42	4.3	3.17	–	12	3.17	–
U-28.84	–	28.84	66.8	4.8	3.67	–	21.5	3.67	–
UI-30	35	30	25	10	10	–	10	10	–
UI-12.7	15.875	12.7	12.7	3.175	3.175	–	6.35	3.175	–